

NEW COLOURS

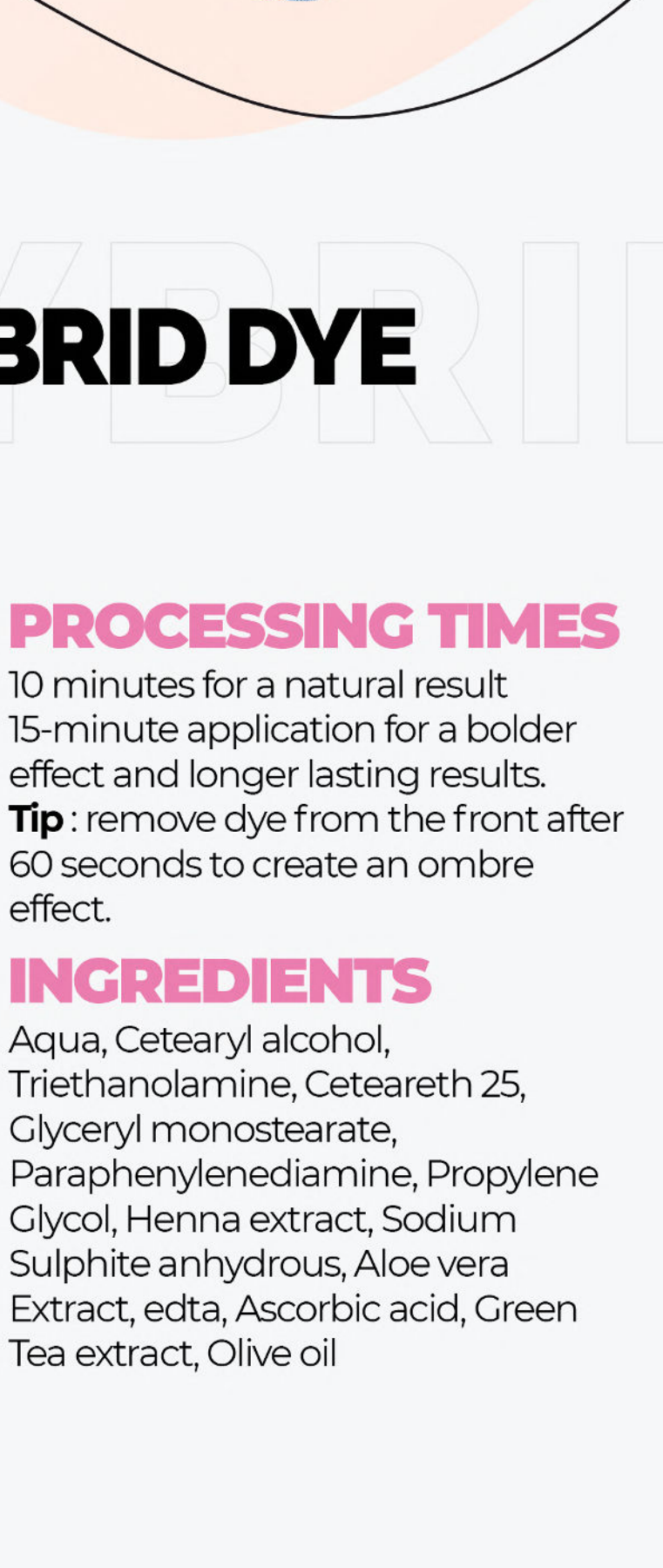
NOEMI

DYE



2-IN-1 treatment

This product not only colours the hair and creates a beautiful stain on the skin but it contains nourishing ingredients which will help strengthen, protect the hair and stimulate its growth.



NOEMI HYBRID DYE

The ph value is 9-10, which means that it penetrates through the hair making the dyes last for about 8 days on the skin and 5/6 weeks on the hair providing an intense final result. The range offers 9 beautiful colours + 1x clear colour corrector meaning you can create a variety of shades and perfectly customise those to your client's needs!

PROCESSING TIMES

10 minutes for a natural result
15-minute application for a bolder effect and longer lasting results.
Tip: remove dye from the front after 60 seconds to create an ombre effect.

INGREDIENTS

Aqua, Cetearyl alcohol, Triethanolamine, Cetareth 25, Glyceryl monostearate, Paraphenylenediamine, Propylene Glycol, Henna extract, Sodium Sulphite anhydrous, Aloe vera Extract, edta, Ascorbic acid, Green Tea extract, Olive oil

SPECIFICATION

Vegan
Pao 12 months
15ml
Around 60 uses per tube

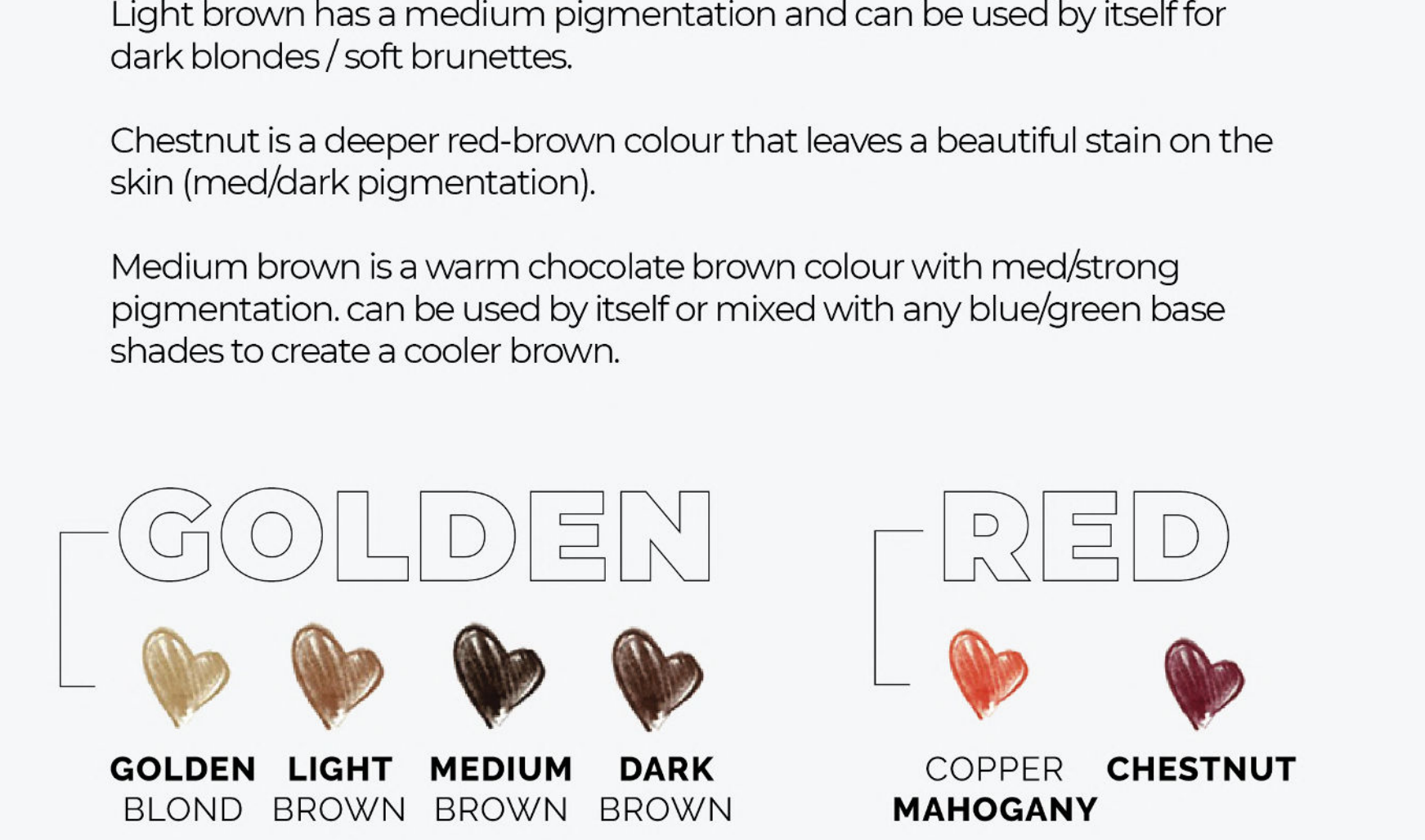
APPLICATION

Mix the noemi dye with the 3% solution in a ratio of 1:1.
Leave for 10-15 minutes depending on the desired results.



NOEMI COLOR DESCRIPTION

and color depth



In this scale all noemi shades are listed according to their colour depth and intensity of the shades that remain on the skin after tinting. Knowing the pigmentation of noemi dyes can be useful for understanding which ones to use when wanting to achieve a natural or bold effect on the skin.

INTENSITY LOW TO MID

- Golden blond, copper mahogany, graphite are the lightest colours with a low pigment intensity.
- They leave a very slight stain on the skin making them the perfect shades to be used as colour correctors.
- Use golden blond to add warmth.
- Use copper mahogany to add a red tone
- Use graphite to add coolness to your mixes.

INTENSITY MEDIUM TO HIGH INTENSITY

Light brown has a medium pigmentation and can be used by itself for dark blondes / soft brunettes.
Chestnut is a deeper red-brown colour that leaves a beautiful stain on the skin (med/dark pigmentation).
Medium brown is a warm chocolate brown colour with med/strong pigmentation. can be used by itself or mixed with any blue/green base shades to create a cooler brown.

GOLDEN



GOLDEN BLOND YELLOW PIGMENT
LIGHT BROWN YELLOW ORANGE PIGMENT
MEDIUM BROWN ORANGE PIGMENT
DARK BROWN RED-ORANGE PIGMENT

RED



COPPER MAHOGANAY RED PIGMENT
CHESTNUT COLD RED PIGMENT

NATURAL



BLACK NEUTRAL PIGMENT

ASH



GRAPHITE BLUE GREEN PIGMENT
BLUE BLACK BLUE VIOLET PIGMENT

OUR TO GO COLOUR MIXES

NOEMI'S FAVOURITE COLOURS & MIXES FOR



GOLDEN BLOND

YELLOW PIGMENT

LIGHT BROWN

YELLOW ORANGE PIGMENT

MEDIUM BROWN

ORANGE PIGMENT

DARK BROWN

RED-ORANGE PIGMENT

COPPER MAHOGANAY

RED PIGMENT

CHESTNUT

COLD RED PIGMENT

BLACK

NEUTRAL PIGMENT

GRAPHITE

BLUE GREEN PIGMENT

BLUE BLACK

BLUE VIOLET PIGMENT

NOEMI 3% DYE SOLUTION

DESIGNED SPECIFICALLY FOR USE WITH THE NOEMI DYE HYBRID TINT COLOURS



NOEMI 3% DYE SOLUTION

Thanks to a creamy consistency it facilitates mixing and does not drip during application.
Pao 24 months
Available in two formats of 14 ml And 100ml.

PROCESSING TIMES

10 minutes for a natural result
15-minute application for a bolder effect and longer lasting results.
Tip: remove dye from the front after 60 seconds to create an ombre effect

INGREDIENTS

Aqua, hydrogen peroxide, cetostearyl alcohol, propylene glycol, sodium stannate

APPLICATION

Mix the noemi dye with the 3% Solution in a ratio of 1:1.
Leave for 10-15 minutes depending on the desired results.



NOEMI BROW PRIMER

DESIGNED SPECIFICALLY TO PREP THE BROWS PRIOR TO DYE APPLICATION

NOEMI BROW PRIMER

Noemi primer gently and effectively prepares the eyebrow area for the tinting procedure.
Removes the make-up residues, cleanses the skin and hair without drying them
It is recommended to use before each treatment to achieve the best results.

INGREDIENTS

Purified water, propanediol, sorbitan oleate decylglucoside crosspolymer, glycerol, sorbitan caprylate (and) propanediol (and) benzoic acid, lactic acid.

SPECIFICATION

Gel consistency Ph value is 6-7
Pao 24 months
50ml

APPLICATION

Before dye application spray twice on a cotton round and wipe over the brow area thoroughly.



NOEMI REMOVER

DESIGNED SPECIFICALLY TO REMOVE DYE FROM THE BROW AREA DURING AND AFTER APPLICATION

NOEMI REMOVER

The noemi remover is an indispensable product for those who carry out eyelash and eyebrow tinting treatments.
In addition to removing any spots from the skin, the remover can be used to correct eyebrows that are too dark in some areas and allows you to reduce the intensity of the colour.

APPLICATION

Apply the noemi remover product to a cotton pad or cotton swab and remove the dye from the desired area.
Then wipe the same area with a wet cotton round/tip.

INGREDIENTS

Purified water, rose water, capryloyl - caproyl methyl glucamide (and) lauroyl/miristoyl methyl glucamide, glycerine, sorbitan caprylate (and) propanediol (and) benzoic acid, sodium gluconate.

YOU CAN FIND NOEMI ON:

export@noemi-professional.com

www.noemi-professional.com

noemi_professional

